

TIH | TOURISM INFORMATION & SERVICES HUB

TRAVEL SOFTWARE SERVICES

WHAT IS IT?

TIH's plug-and-play travel software services are created for tourism businesses to use in your digital channels.

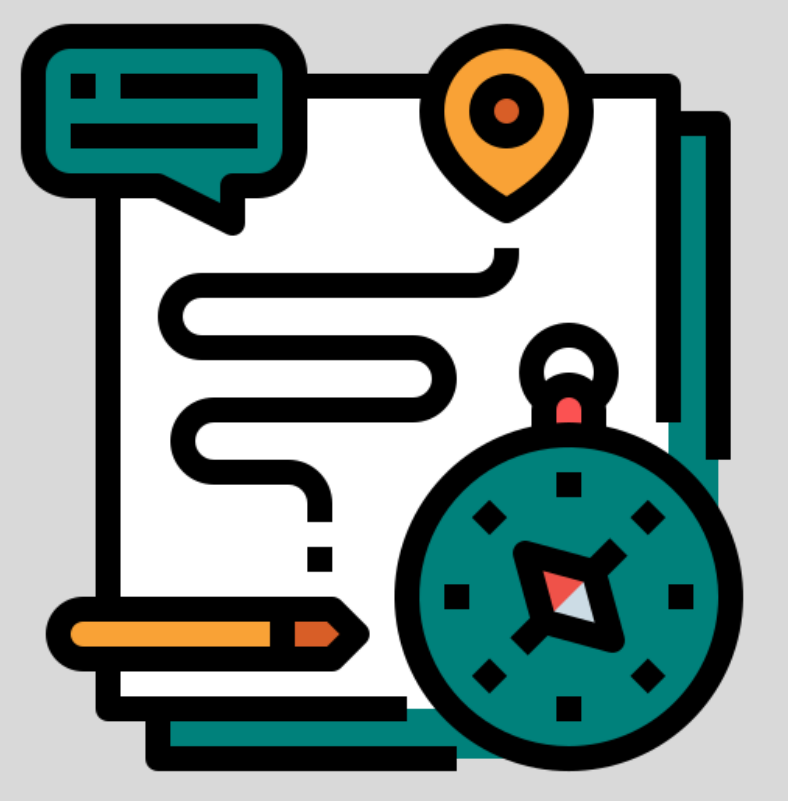
These Travel Software Services are **free for use** and can be easily drawn via Application Programme Interfaces (APIs). It allows you to **enhance visitor experiences** and **save business costs**.

WHAT ARE THE DIFFERENT TYPES?



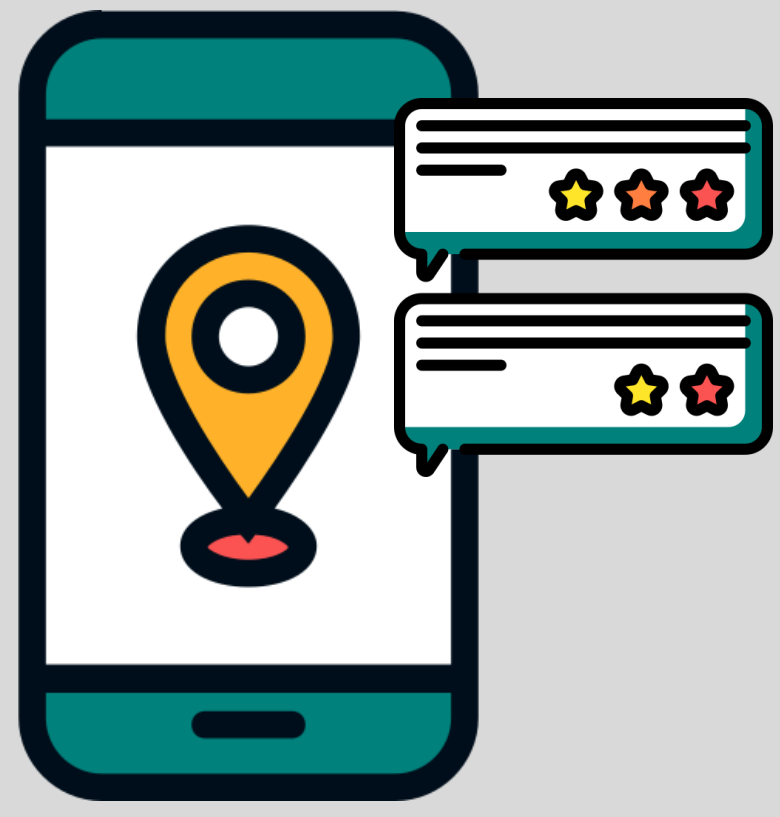
ENHANCED NAVIGATION SERVICE

Allow your customers to **navigate around Singapore with ease** and **discover more offerings** along the route to their selected destination.



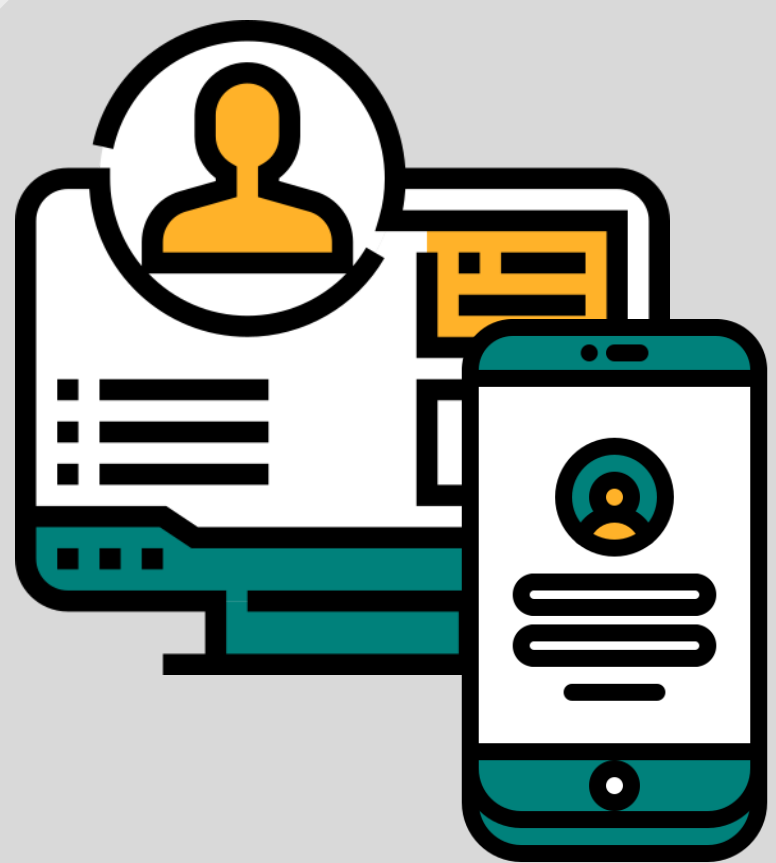
SMART ITINERARY PLANNER

Empower your customers to create their own Singapore itineraries. It **generates itineraries based on their preferences**, allowing them to enjoy a seamless visitor experience.



RECOMMENDATION ENGINE

Personalise your customers' experiences through **activity suggestions**, based on data insights on their needs, profiles and experiences.

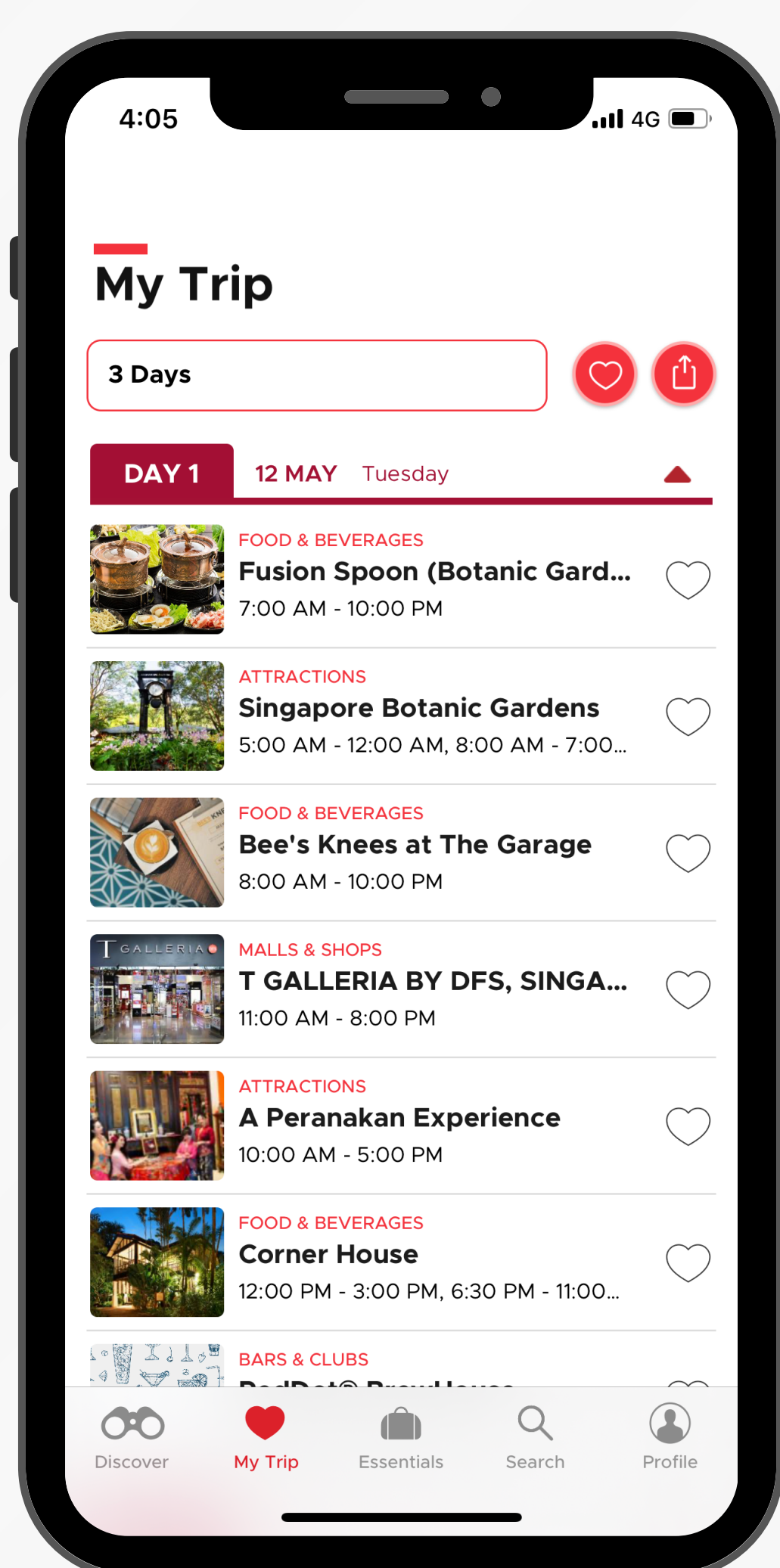


VISIT SINGAPORE ACCOUNT

Enable **quicker** and **more convenient log in** to your digital applications, as your customers can now choose to log in via their Visit Singapore Account.

WHAT ARE SOME EXAMPLES?

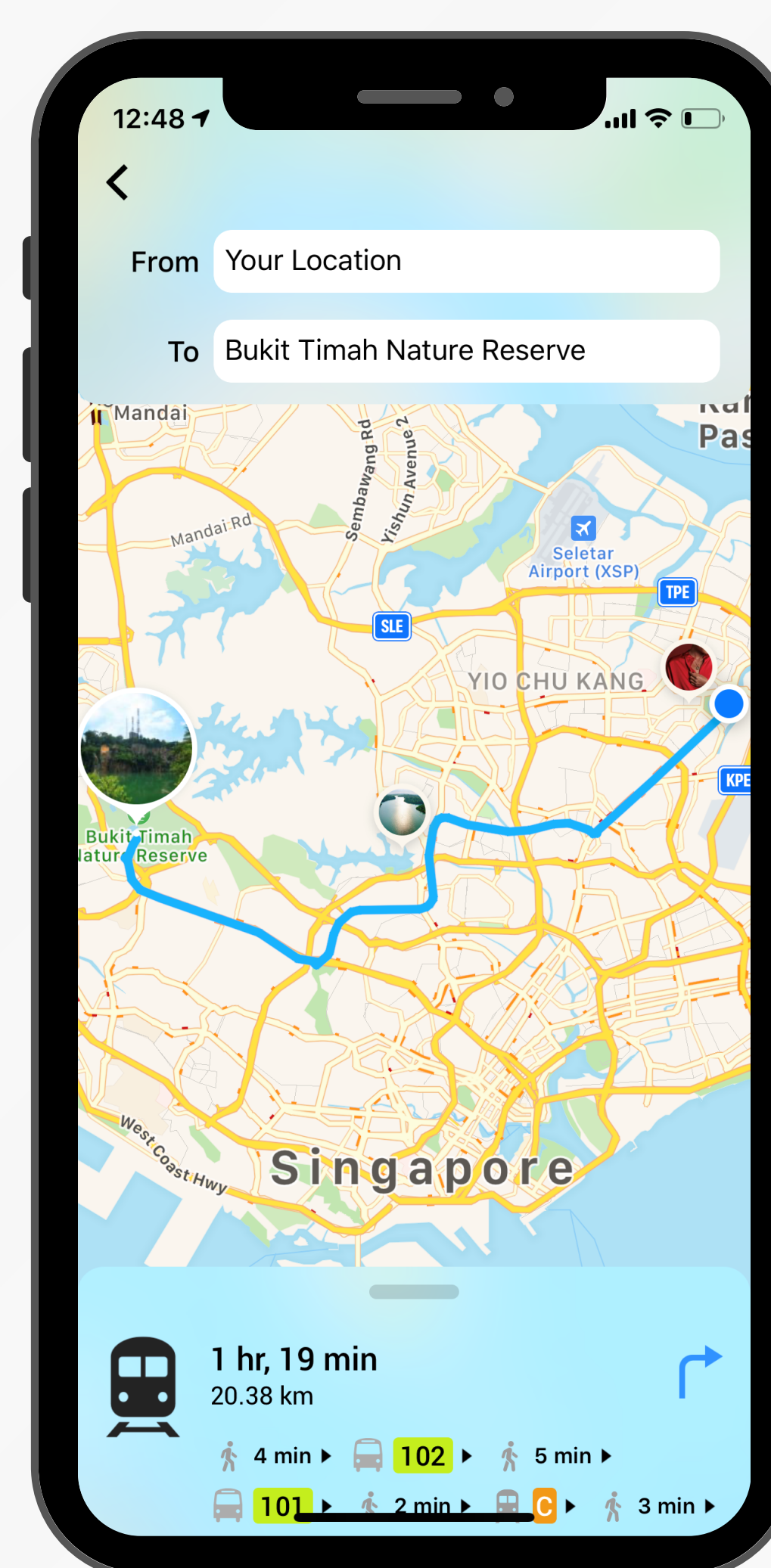
SMART ITINERARY PLANNER ON VISIT SINGAPORE APP



The itinerary is generated based on the visitors' length of stay and preferences.

This allows visitors to enjoy a seamless visitor experience customized just for them.

ENHANCED NAVIGATION SERVICE ON VISIT SINGAPORE APP



The navigation service suggest places of interest along route to the visitors' selected destination.

This allows visitors to discover more places and offerings during their stay in Singapore.

HOW DO I GET STARTED?

VISIT THE TIH DEVELOPER PORTAL TO START USING API

1

Go to TIH Developer Portal (tih-dev.stb.gov.sg)

2

Click on **"Getting Started"** and follow the step-by-step guide to obtain an API key and how to use TIH APIs

