

TIH | TOURISM INFORMATION & SERVICES HUB

APPLICATION PROGRAMMING INTERFACE (API)

WHAT IS API?



An API is a programming-based software interface that acts like a **bridge between two or more applications and/or systems**, enabling them to **seamlessly communication** with each other without making any changes in the original application or system

API IN DAILY LIFE



API is used to facilitate **online payment, online booking, registration** and many more.

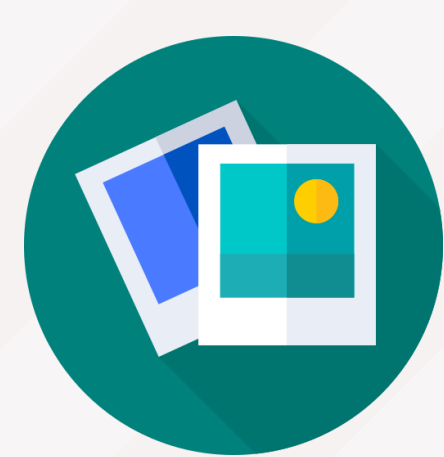
WHAT CAN TIH API DO?



Contributor



Contribute **Content** (e.g., events, tours, operating hours etc).



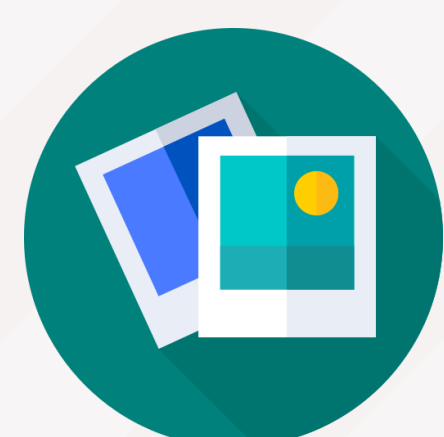
Contribute **Media** (e.g., images and videos).



Extractor



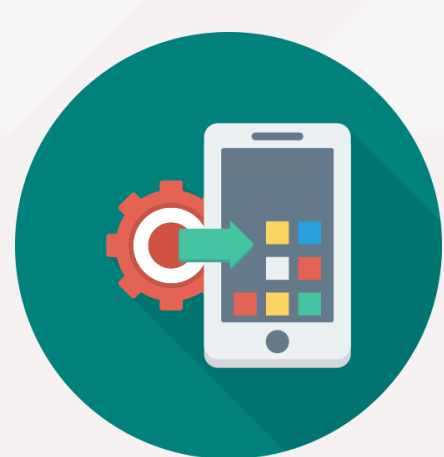
Extract **Content** (e.g., walking trails, events, restaurants etc).



Extract **Media** (e.g., free-to-download images and videos).



Extract **3rd Party Content** (e.g., weather, transport etc).



Use **Travel Software Services** (e.g., Recommendation Engine, Visit Singapore Account etc).



LEARN MORE ABOUT TIH APIS

HEAR FROM OUR PARTNERS



“With TIH APIs, we no longer need to consolidate information from multiple platforms and can rely on TIH as a one-stop platform for all tourism-related information and content. This tool allows us to develop more games that can weave in with Singapore's tourism scenes.”

- Kenny Choy, Co-Founder of Sqkii