

EXTRACTING CONTENT FROM TIH

A CONTENT ON TIH

TYPES OF CONTENT ON TIH

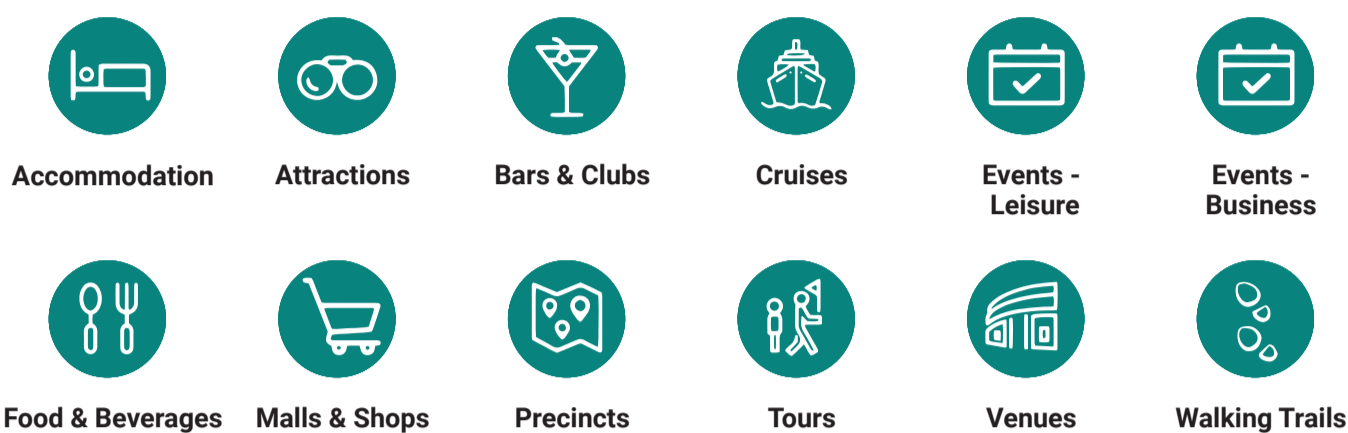


Tourism Offerings
Information about Singapore tourism offerings



Media Assets
Images, Videos, 3D Models

CONTENT CATEGORIES

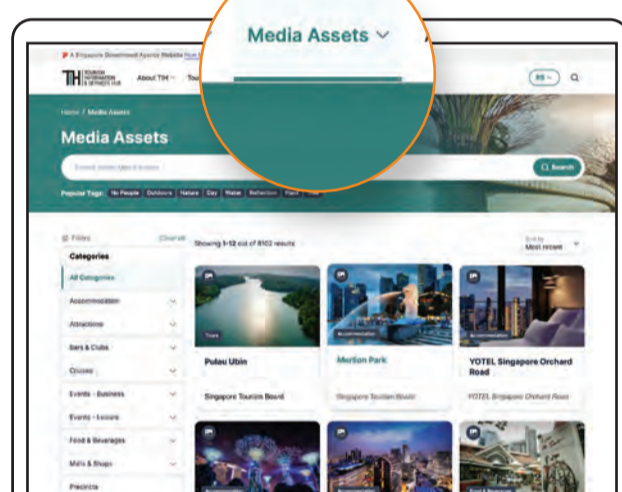
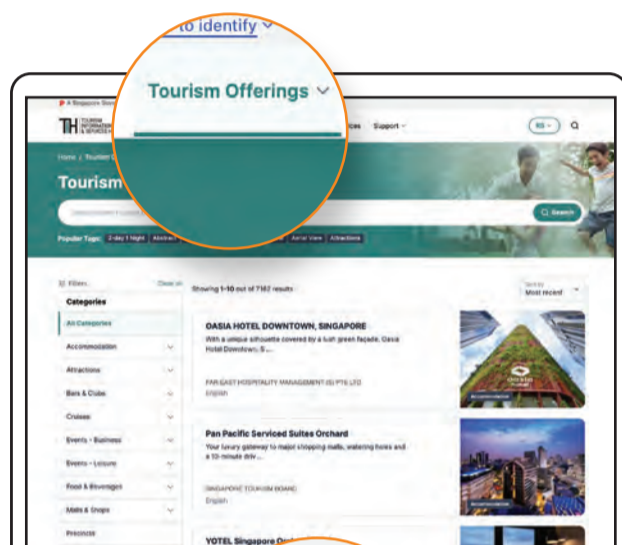
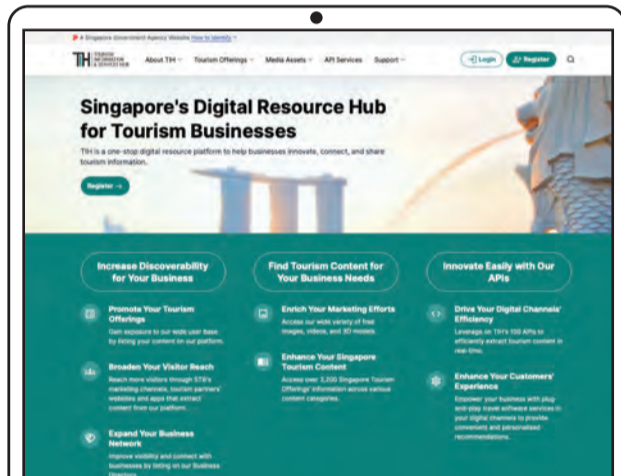


B ACCESSING CONTENT ON TIH

1. How to search for content on TIH

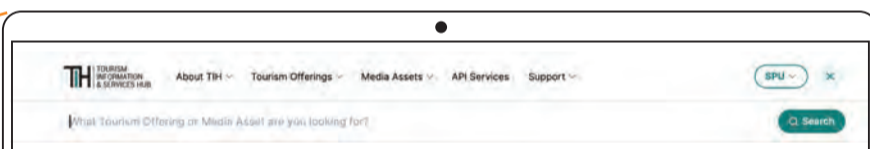
A. Navigating TIH

Navigate to Tourism Offerings or Media Assets and search for content. Use the filters to narrow down your search options.



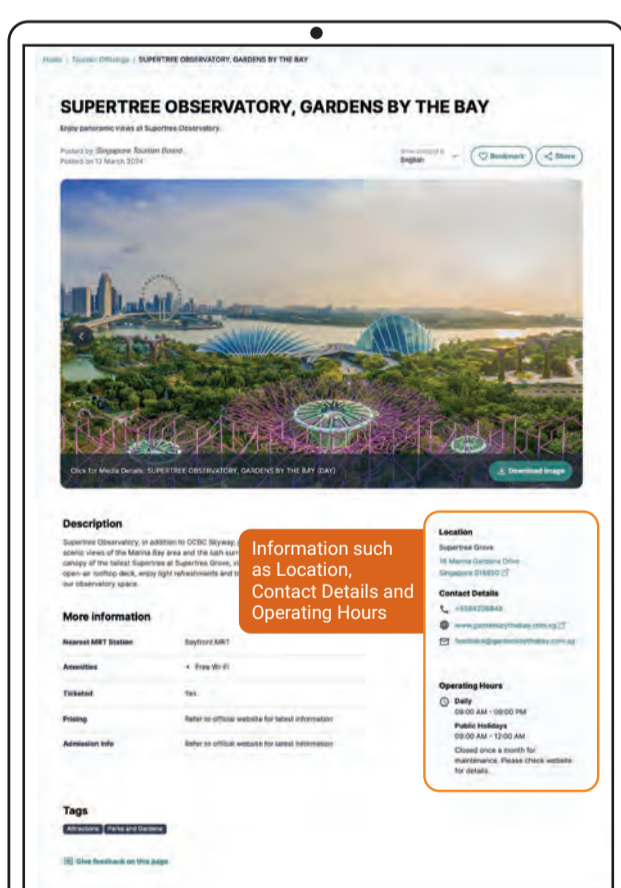
B. Global Search

Use the Global Search and key in keywords of the content you are searching for to search across Tourism Offerings and Media Assets.



2. What you can do with content from TIH

ACCESS TOURISM OFFERING INFORMATION

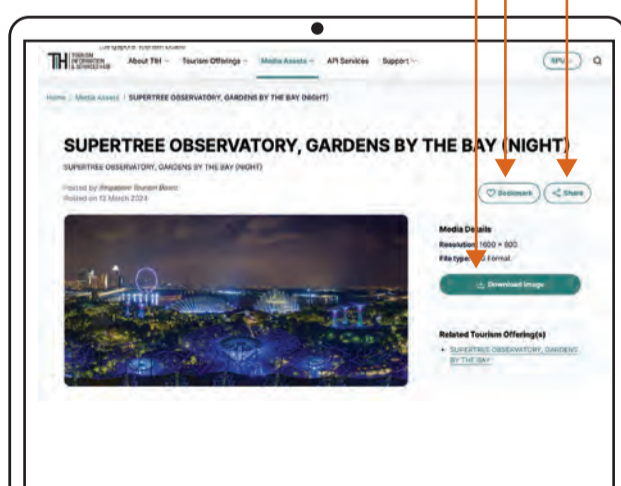


Information such as Location, Contact Details and Operating Hours

SHARE CONTENT

BOOKMARK LISTING

DOWNLOAD MEDIA ASSETS



DID YOU KNOW you can extract content through APIs?

You can efficiently extract large volume of content and media through Application Programming Interfaces (APIs) offered on TIH. Visit the [Developer Portal](#) for more information on API integration.

C TIH CONTENT POLICY



- Content on TIH has global, perpetual, non-exclusive and royalty-free rights.
- There is also no need to give attribution when you use TIH's content. More information on TIH usage rights [here](#).
- Content on TIH is contributed by Singapore registered businesses, ensuring the quality and validity of information.

CONTACT US

Discover the content available on TIH [here](#). For more information, reach out to us at STB_TIH@stb.gov.sg.